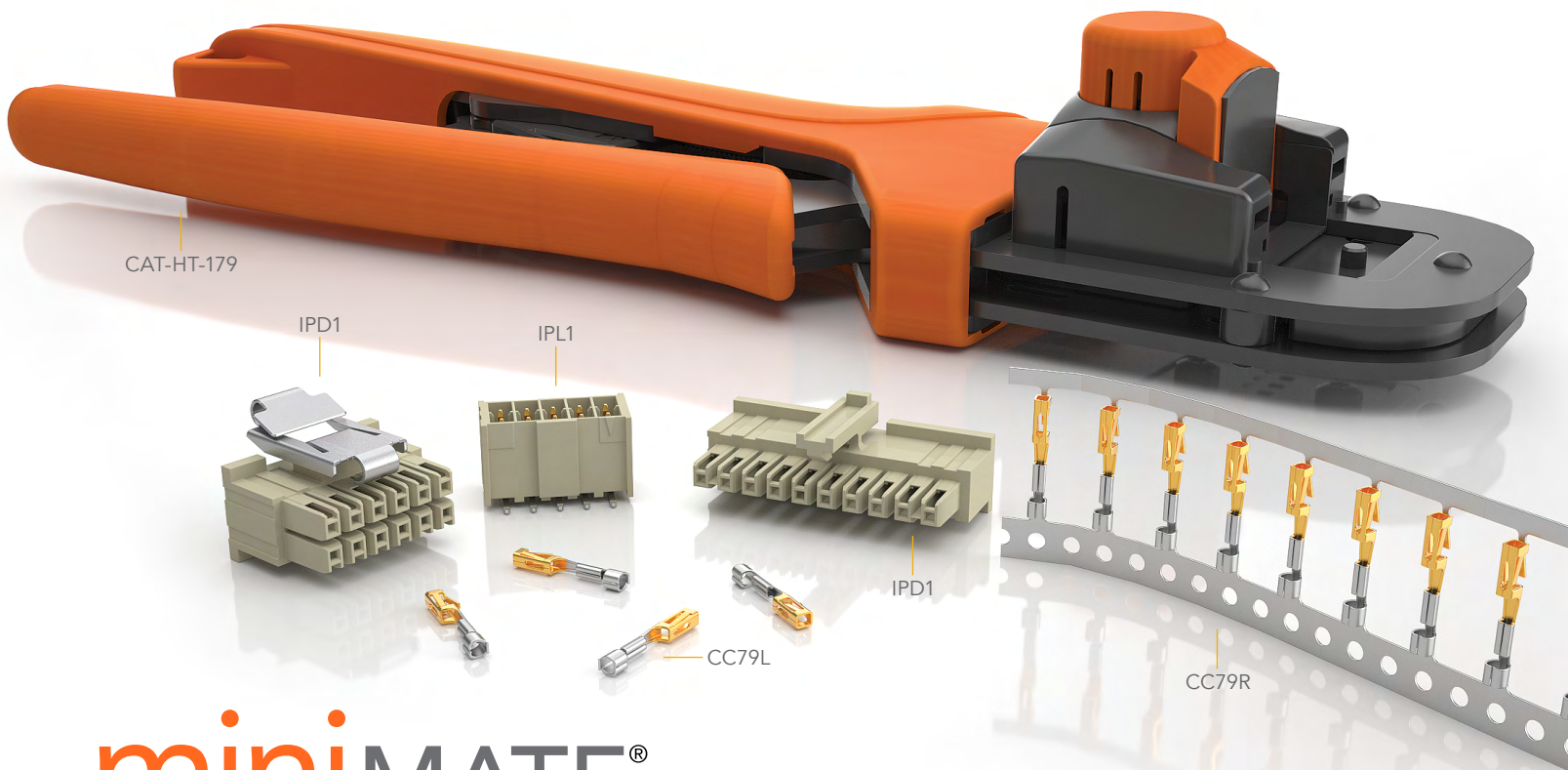




FLEXIBLE POWER DISCRETE WIRE SOLUTIONS

2.54 mm PITCH MINI MATE® SOLUTIONS

- Cable-to-board, cable-to-cable and cable-to-panel applications
- Available as components with tooling or complete cable assemblies
- Choice of socket and terminal assemblies
- Individually shrouded contacts for electrical and mechanical protection
- Selectively load contacts for creepage and clearance requirements
- Mating terminal strip in vertical, right-angle and elevated right-angle
- Single or double row
- Up to 50 total pins
- 20 to 30 AWG cable options in PVC or Teflon®
- Color coded cables available
- 4.8 A/pin (20 AWG)
- Rugged positive latching for increased retention



miniMATE®

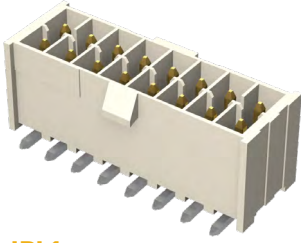
DuPont™ Teflon® is a registered trademark of E.I. duPont de Nemours and Company or its affiliates.

Applications

- Measuring/Controlling Devices
- Vehicle Lighting Equipment
- Home Audio/Video Equipment
- Surgical and Medical Instruments
- Switchgear/Switchboards
- Radio/TV Communications Equipment
- Refrigeration/Heating Equipment
- Search/Navigation Equipment
- Optical Instruments/Lenses
- Motors/Generators
- Telephone/Telegraph Apparatus
- Whole Computers/Peripherals

To learn more about Samtec's Mini Mate® solutions, please visit samtec.com

2.54 mm PITCH MINI MATE® SOLUTIONS



IPL1

Single and Double Row Terminal Header



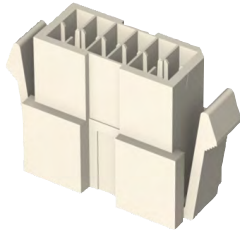
IPD1

Single and Double Row Socket Housing



IPM1

Single and Double Row Terminal Housing



IPR1

Double Row Panel Mount Housing



CC79L/CC79R

Contact, Loose Piece and Full Reel (12K/reel)



T1M74-L/T1M74-R

Terminal, Loose Piece and Full Reel (15K/reel)

TOOLING SOLUTIONS



Bench Top Mini Applicators

CAT-MC-174-2024-XX-01
CAT-MC-174-2630-XX-01
CAT-MC-179-2024-XX-01
CAT-MC-179-2630-XX-01



Hand Tools

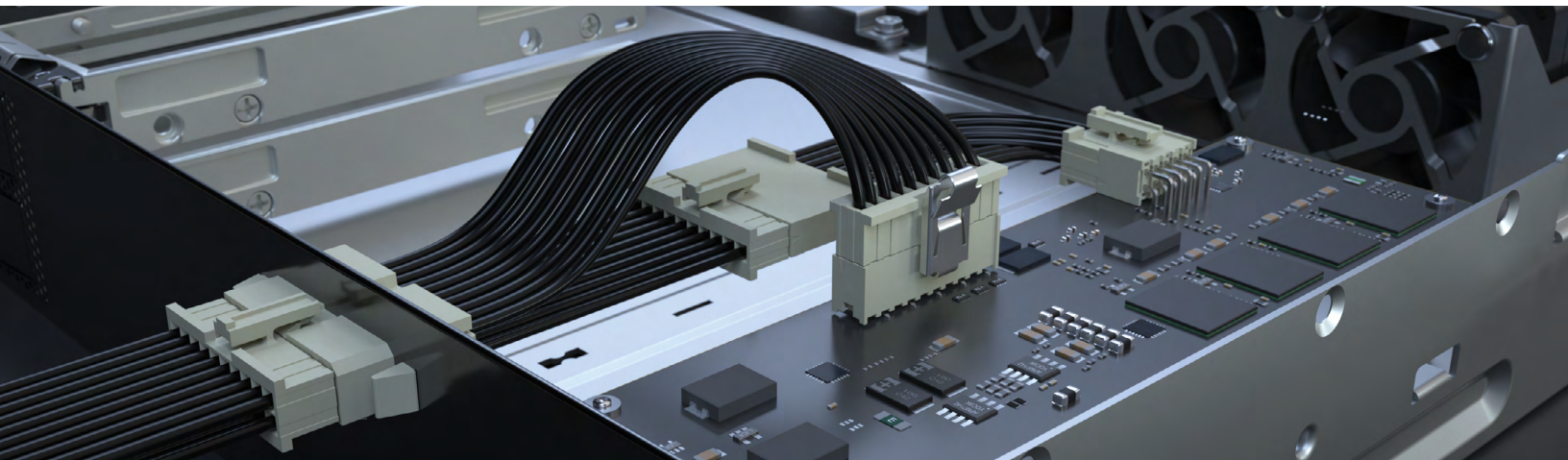
CAT-HT-174-2030-13
CAT-HT-179-2030-13
CAT-EX-74-01
CAT-EX-179-01

CABLE ASSEMBLIES

MMSS(T)/MMSD(T)
- Socket

MMTS(T)/MMTD(T)
- Terminal

MRTD(T)
- Panel Mount Terminal



To learn more about Samtec's Mini Mate® solutions, please visit samtec.com